



Components Of Community Based Assessment (CBA)

Assets :

- Saham women's association.
- The valley area.
- Saham old mosque.
- Aal Orsan guest house.





Saham women's association

- ✓ High quality Local products.
- ✓ Local tourist guides.
- ✓ Active presence in the area.
- ✓ Local festivals "Saham cultural festival".

Aal Orsan guest house

- ✓ Cultural and historical values.
- ✓ Architectural value.
- ✓ Interactive with local community.

Saham old mosque

- ✓ Cultural and historical values "was church before".
- ✓ Oldest mosque in Saham.
- ✓ Architectural value.



RESMYLE

Valley Area

- ✓ Magnificent environment and views.
- ✓ Potential for hiking.
- ✓ Architectural value.
- ✓ High quality Guava production.
- ✓ Environmental value "Protected Oak Trees".
- ✓ Historical value "Ancient caves and springs".





RESMYLE

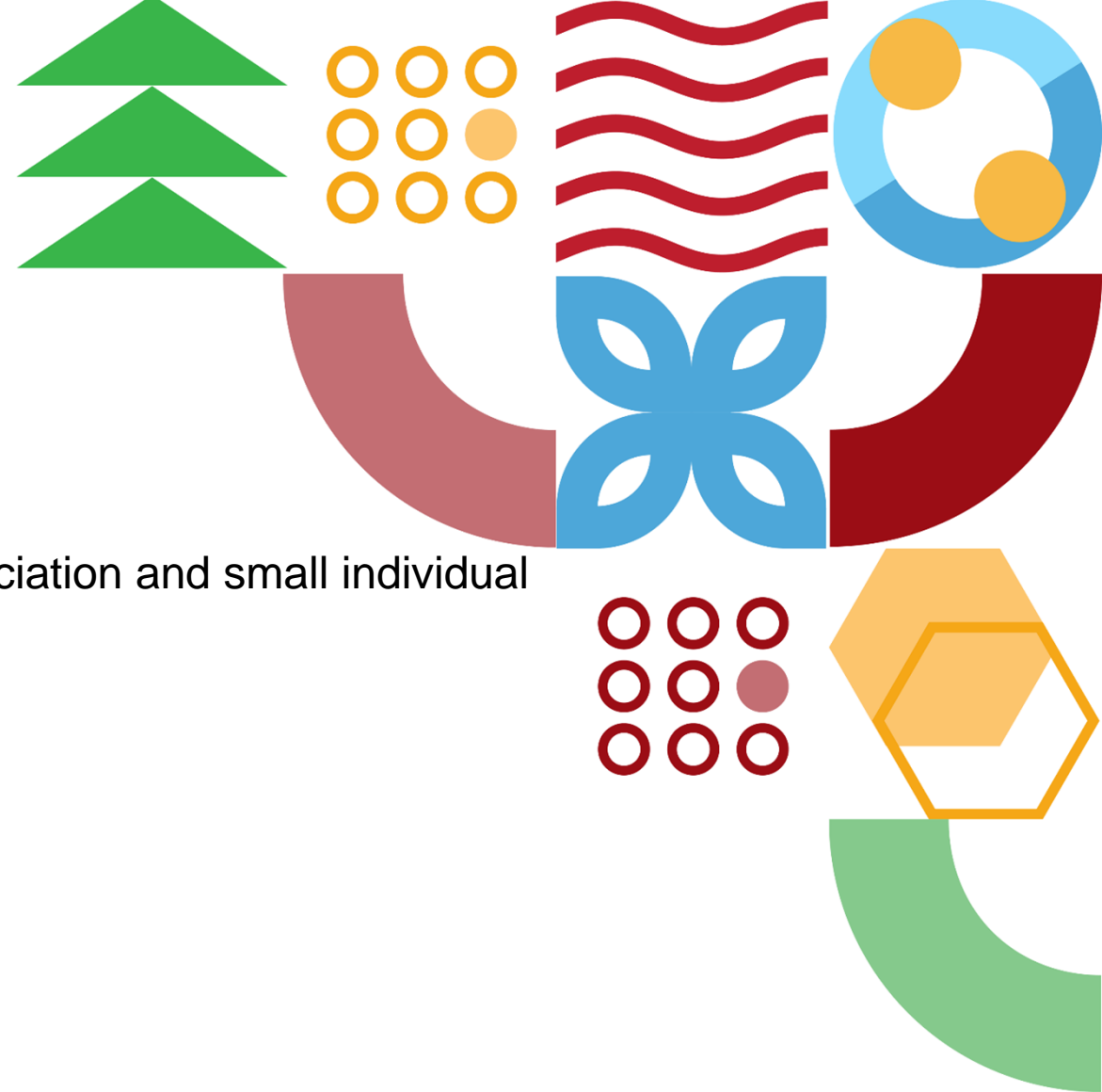
Stakeholders

- Saham women's association
- Touristic guides
- Farmers
- Saham Alkfarat tourist Association
- Al Rousan guest house



RESMYLE Challenges

- Lack of financial and governmental support for local association and small individual projects.
- Poor marketing channels.
- Poor signage system.
- No services.
- Poor infrastructure.
- No hiking tools.
- Inaccessible for elderly people.





RESMYLE

- Environmental ,natural and historical value.
- Local products and handcrafts.
- Active presence for local civic organizations.
- Welcoming community.

Strengths

Weakness

- Lack of financial and governmental support for local association and small projects.
- Poor marketing channels.
- Poor signage system.
- No services.
- Poor infrastructure.
- No hiking tools and inaccessible for elderly people.

- Green cover.
- High qualified community.
- Magnificent views.

Opportunities

Threats

- No Threats.



Assets

Diamond Olive mill

- ✓ Modern system
- ✓ Olive oil presses
- ✓ High quality products
- ✓ Eco-Friendly indentures

Qweilbeh (Abila (Peraea)

- ✓ One of the ten cities in the Decapolis alliance
- ✓ Establishing during the days of the Greeks and the Romans

Kofr Som Pomegranate association

- ✓ Pomegranate local products
- ✓ Zero waste
- ✓ Eco-Friendly indentures
- ✓ High quality products
- ✓ Pomegranate festival

Stakeholders

Diamond Olive mill

Eng. Jafar Alshredih



Kofr Som Pomegranate association

Eng. Ahed Obeidat



Challenges

- Guides
- Services
- Marketing challenges
- Infrastructure



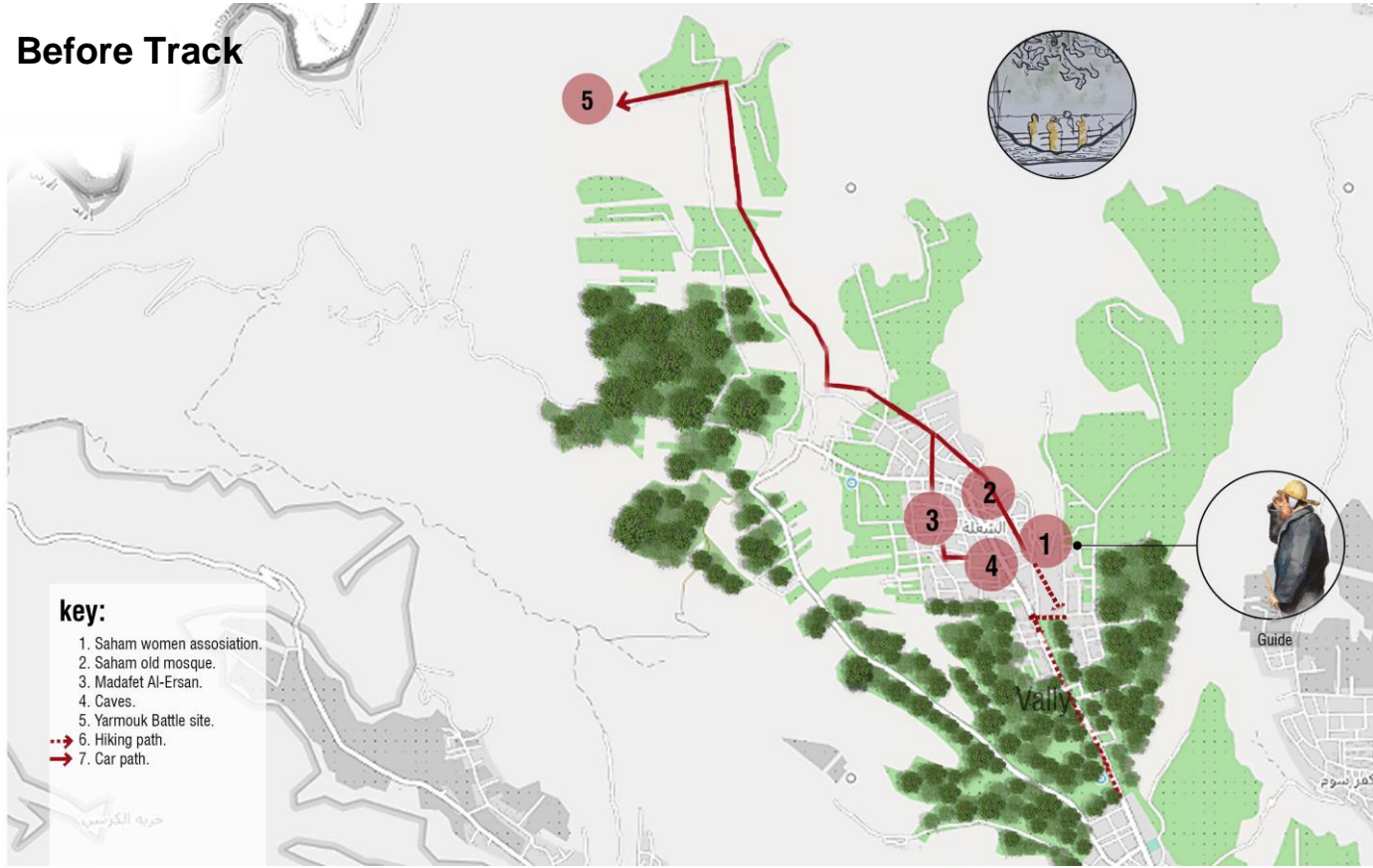


RESMYLE



RESMYLE

Before Track





TOURISM ROUTES IN BNI-KENANAH

In Jordan, tourism is highly centered in popular tourist sites such as the Dead Sea, and Petra, however, local communities with rich natural and cultural tourist locations are often overlooked by tourists and by decision-makers. One area in Jordan facing this challenge is Bani-Kenanah located in the North of Jordan. Bani Kenanah is home to natural reserves, forests, local agricultural practices, and numerous historical and cultural buildings and sites. Despite this diversity, tourism activities in the region is limited and mostly overlooked by local and international tourists.



ECO-TOURISM ROUTE



AGRI-TOURISM ROUTE



HERITAGE TOURISM ROUTE

Home > [Eco-tourism Route](#)

SAHAM VILLAGE

The town of Sahem al-Kafarat, located in the far north of the Kingdom and Irbid Governorate, is considered among the most beautiful regions of the Kingdom, as it is characterized by its greenery, beautiful hills and valleys.

The town is famous for being the site of the Yarmouk battle between the Muslim army and the Byzantine army in 636 AD. In addition, it is distinguished by its distinctive view of the Yarmouk River and the occupied Golan Heights, in addition to Jabal al-Sheikh. It is also famous for its olive oil, which is among the finest types of oil in the Kingdom.

It is recommended to visit the area at the end of winter and during the spring, as it has many tourist attractions, the most famous of which are Al-Usha and Al-Shula Park and the site of the Yarmouk Battle, in addition to many valleys and some waterfalls.



Hiking Routes



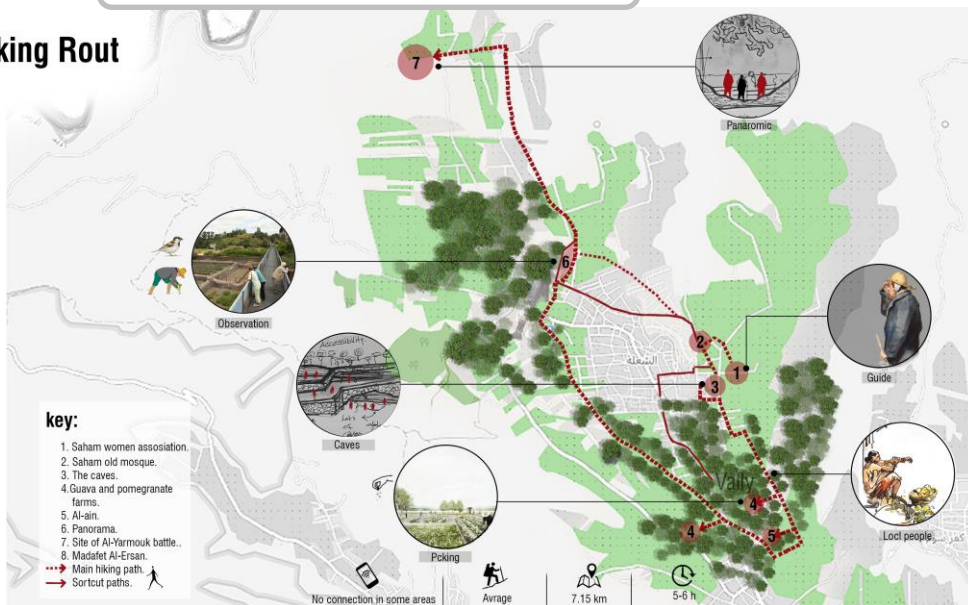
Biking Routes

Home > Eco-tourism Route > Saham Village > [Hiking Routes](#)

Map & Location

Activates

Hiking Rout



1. Saham women association.
2. Saham old mosque.
3. The caves.
4. Guava and pomegranate farms.
5. Al-ain.
6. Panorama
7. Site of Al-Yarmouk battle
8. Madinet Al-Ersan

Home > [Eco-tourism Route](#) > Saham Village > [Hiking Routes](#)

Services



Overnight



Traditional
foods



Transport
modes/car



Guide



Telescope

Requirements and Safety



Water



Snacks



Walking Stick



Cape



Shoes



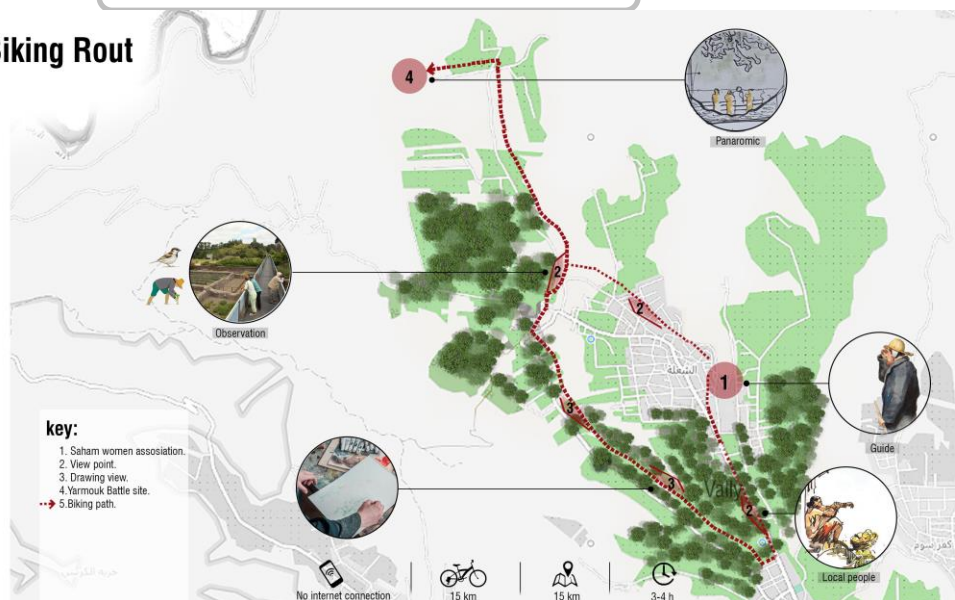
Suitable clothes

Home > Eco-tourism Route > Saham Village > [Biking Routes](#)

Map & Location

Activates

Biking Rout



1. Saham women association.
2. View point.
3. Drawing view.
4. Yarmouk Battle site.

[Home](#) > [Eco-tourism Route](#) > [Saham Village](#) > [Biking Routes](#)

Services



Overnight



Traditional
foods



Support car



Guide



Telescope

Requirements and Safety



Water



Snacks



Band aid



Helmet



Shoes



Suitable clothes

[Home](#) > [Agri-tourism Route](#) >

KOFR SOM VILLAGE

The village of Kafr Soum.... It is located in Kafr Soum, north of the city of Irbid, 18 km away from the center of the governorate. Kafr Soum is famous for its olive and pomegranate cultivation. In Kafr Soum there is an ancient sports club. It has a spring of water called Ain Trab. It also presented the first Jordanian martyr, the martyr Kayed Mufleh Al-Obaidat, on the soil of Palestine



Seasonal



Off Seasonal

[Home](#) > [Agri-tourism Route](#) > [Kofr Som Village](#) > [Seasonal](#)



Walking Routes



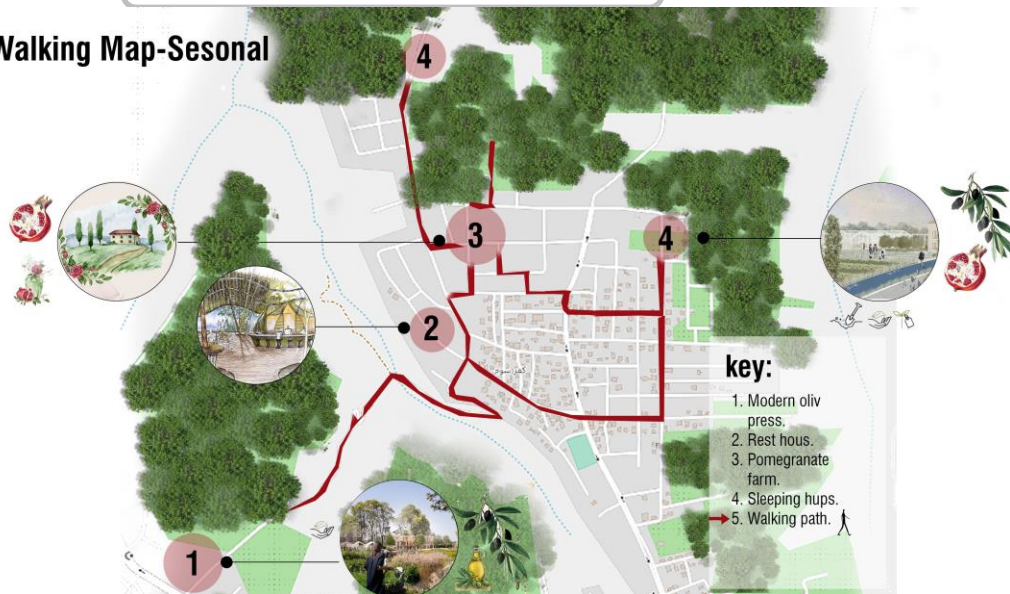
Biking Routes

[Home](#) > [Agri-tourism Route](#) > [Kofr Som Village](#) > [Seasonal](#) > [Walking Routes](#)

Map & Location

Activates

Walking Map-Sesonal



1. Modern oliv press.
2. Rest hous.
3. Pomegranate farm.
4. Sleeping hups.
5. Walking path.

Home > [Agri-tourism Route](#) > Kofr Som Village > Seasonal > [Walking Routes](#)

Services



Overnight



Traditional
foods



Support car



Guide

Requirements and Safety



Water



Snacks



Band aid



Agriculture tools



Shoes



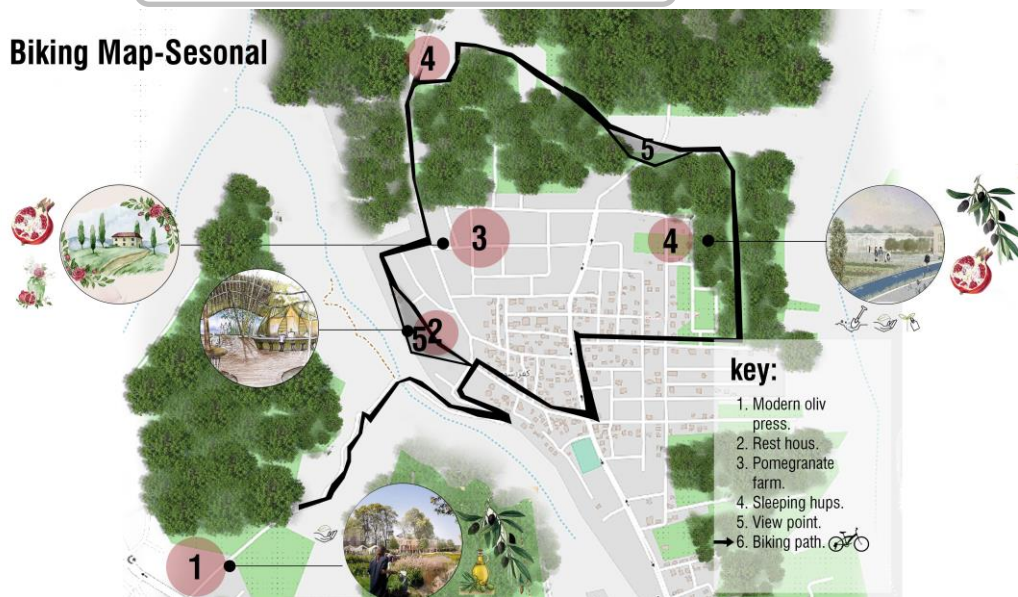
Suitable clothes

Home > Agri-tourism Route > Kofr Som Village > Seasonal > [Biking Routes](#)

Map & Location

Activates

Biking Map-Sesonal



1. Modern oliv press.
2. Rest hous.
3. Pomegranate farm
4. Sleeping hups.
5. View point

Home > [Agri-tourism Route](#) > Kofr Som Village > Seasonal > [Biking Routes](#)

Services



Overnight



Traditional
foods



Support car



Guide



Telescope

Requirements and Safety



Water



Snacks



Band aid



Helmet



Shoes



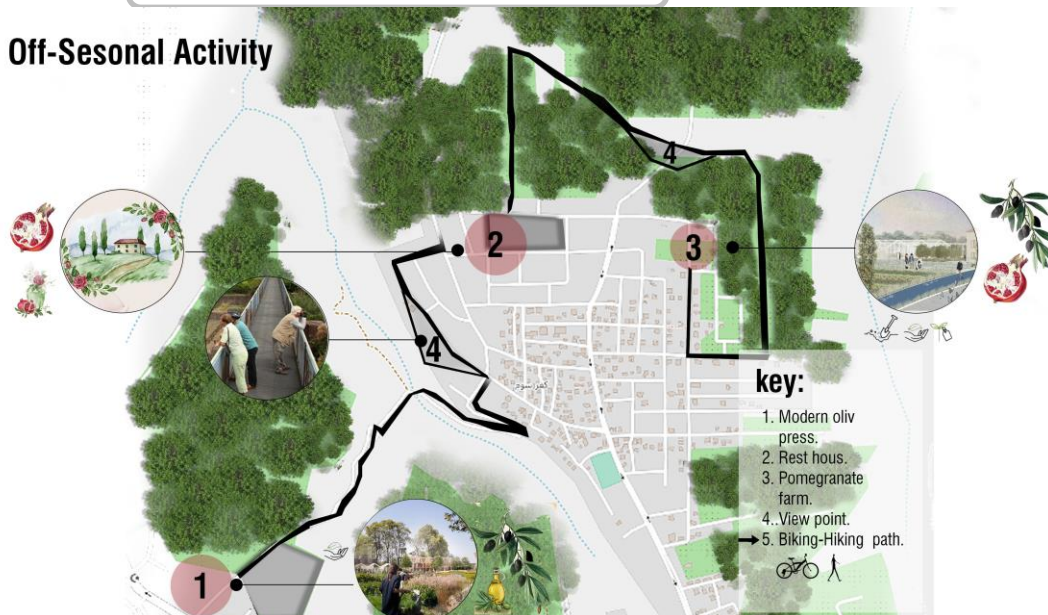
Suitable clothes

[Home](#) > [Agri-tourism Route](#) > [Kofr Som Village](#) > [Off Seasonal](#) >

Map & Location

Activates

Off-Sesonal Activity



1. Modern oliv press .
2. Rest hous .
3. Pomegranate farm .
4. View point .

[Home](#) > [Agri-tourism Route](#) > [Kofr Som Village](#) > [Off Seasonal](#) >

Services



Overnight



Traditional
foods



Support car



Guide



Telescope

Requirements and Safety



Water



Snacks



Band aid



Helmet



Shoes



Suitable clothes

Home > [Heritage Tourism Route](#)

Queilba

Queiba (Haratha) is an extension of the Roman city of (Abella) or sometimes called (Ravana), which is considered one of the ten cities in the Decapolis alliance, which was established during the days of the Greeks and Romans. It has been (Abella) historically inhabited city to this day. Throughout the Roman, Byzantine and Islamic periods, it remained a populated city, and its inhabitants throughout history depended on agriculture, especially the cultivation of olive trees. Its name was changed in history, and its name today is Hartha. The remains of Hartha or (Abella) are still buried underground, waiting to be explored.



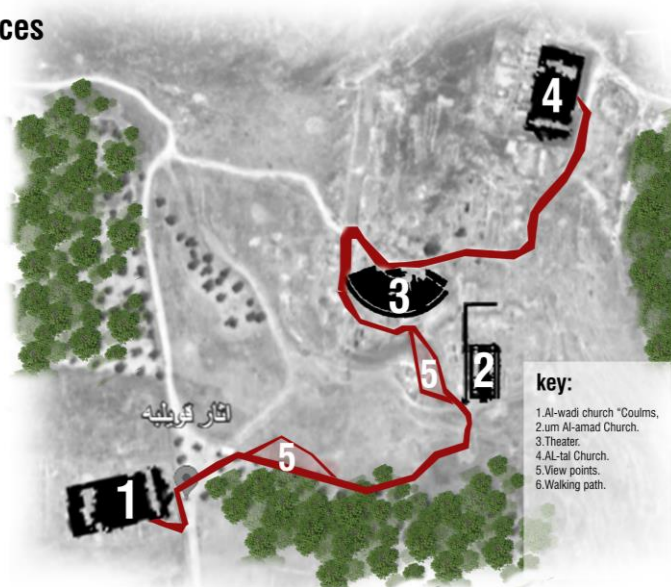
Walking Routes

Home > Heritage Tourism Route > Queilba > [Walking Routes](#)

Map & Location

Activates

Quilbeh-Traces



- Watch the effects
- Learn handicrafts (straw making and stone carving)
- Watching the sunset from the ancient city view
- Summer poetry evenings

[Home](#) > [Heritage Tourism Route](#) > [Queilba](#) > [Walking Routes](#)

Services



Overnight



Traditional
foods



Transport
modes/car



Guide



Telescope

Requirements and Safety



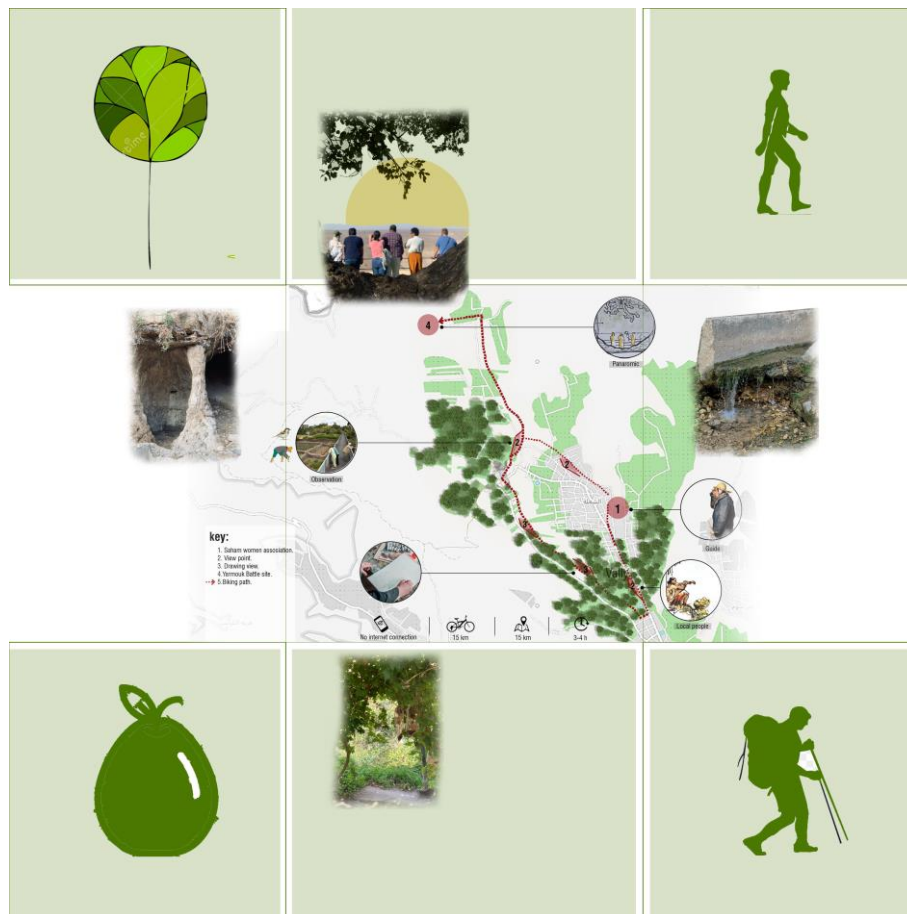
Water



Snacks



Cape





SAHAM

ساحم



