



**ENI
CBCMED**
Cooperating across borders
in the Mediterranean



Programme funded by the
EUROPEAN UNION



**REGIONE AUTÒNOMA
DE SARDIGNA
REGIONE AUTONOMA
DELLA SARDEGNA**

ENI CBC MED Programme 2014-2020 Expenditure Verification Training

ROLE OF CONTROL CONTACT POINTS (CCP)

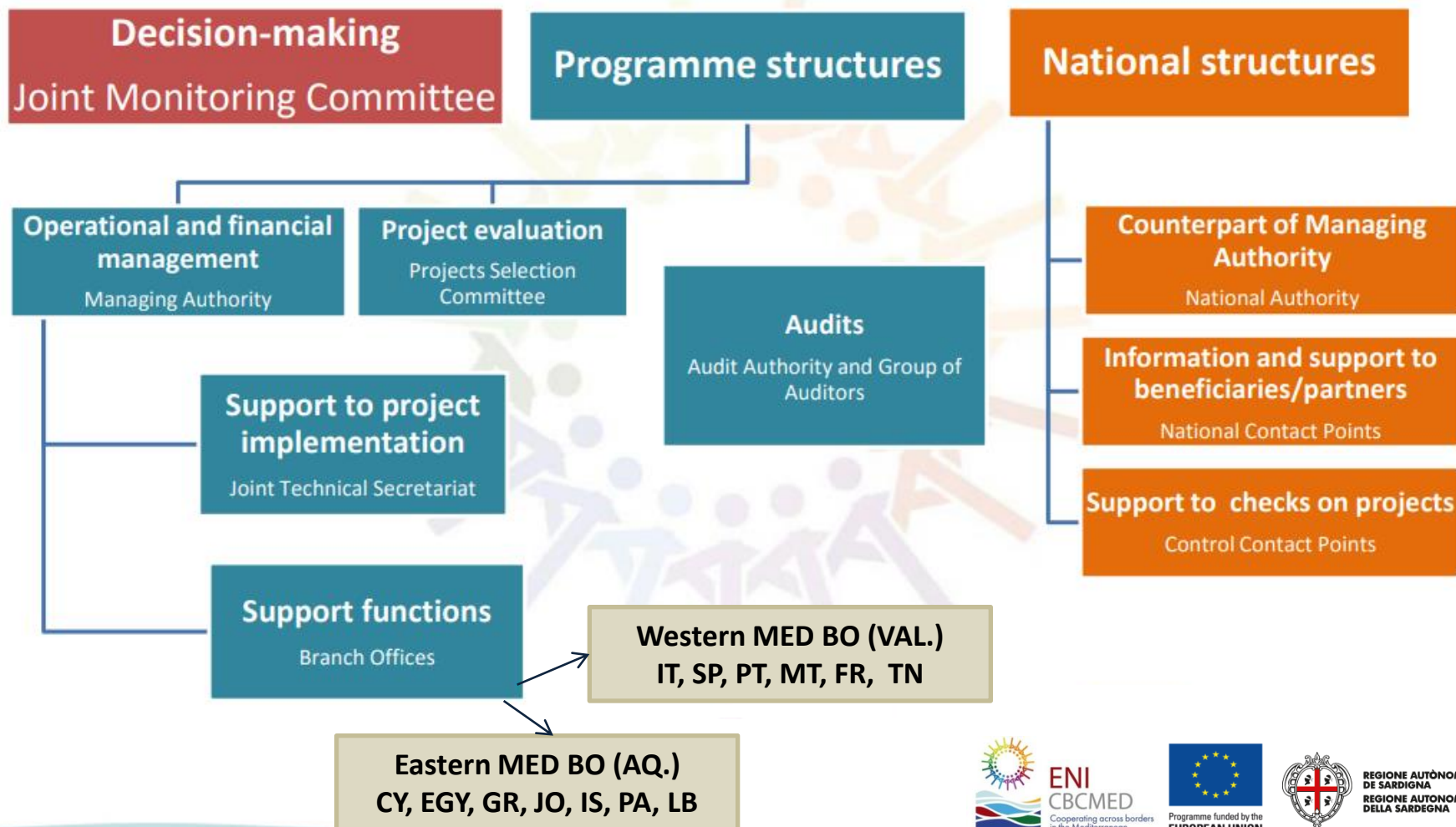
Via WEB.

Greece. Feb., 11th, 2021

Dr. Esmat AlKaradsheh

Coordinator of the Eastern Mediterranean Branch Office - Aqaba

Programme Governance: Who does what



Your Control Contact Point (CCP):



**Ministry of Economy and Development,
Special Secretary for ERDF and CF
funded sectorial OPS**

Christos Tsikmanlis

**Head of FLC Unit Greece (Unit D) of
Certifying and Verifying Authority**

ctsikmanlis@mneec.gr



CCPs play a key role in:

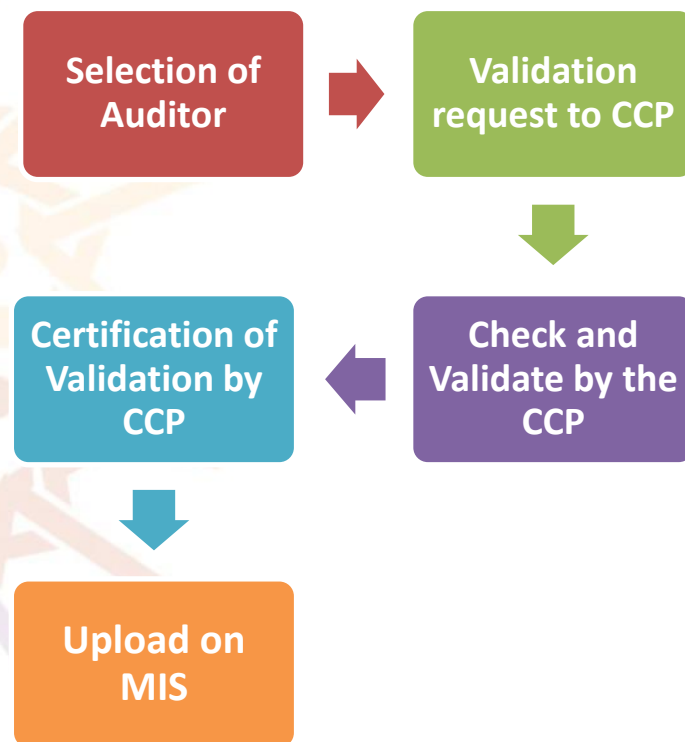
- ✓ Validation of the External Auditors
- ✓ Supporting the MA in its verifications
- ✓ Supporting the MA in the on the spot checks

Validation of External Auditors

Common Functions

End of selection procedure and before sign the contract with the EA;

- **Informs the CCP** about the proposed External Auditor
- The CCP **checks** the national rules and **validates** the proposed EA. The **Certification of Validation** (*i.e. by email and in the national language*)
- Upload the **Certification of Validation** on the MIS



Support the MA in verification

The CCP could be requested to support the MA as foreseen by:

Article 32 of IR 897/2014 Paragraph 2: *“For the purpose of carrying out verifications throughout the whole Programme area, the MA may be assisted by the Control Contact Points. (...).”*

The supporting activity consists of:

- a) *Providing clarifications within the **administrative verifications** for each payment request by beneficiaries*
- b) *Participating in the on-the-spot project verifications.*



ENI
CBCMED
Cooperating across borders
in the Mediterranean



Programme funded by the
EUROPEAN UNION



REGIONE AUTÒNOMA
DE SARDIGNA
REGIONE AUTONOMA
DELLA SARDEGNA

Quality Control: Administrative Checks

How the CCPs will assist the MA:

- Provide information on **specific national rules, procedures** etc.
- The **Authorizing Unit** of the MA may decide to request support and/or clarification.



CCPs should receive copies from Interim/Final reports as well as the Audit reports and relevant annexes to enable CCP to **carry out its quality checks** as the case may be.

On-the-Spot Checks

Will be carried out **on a sample basis** and **at least once during the lifetime** of each project, considering risk factors such as:

- ✓ Project (standard, strategic, capitalization);
- ✓ Budget;
- ✓ Size and geographical representation of the partnership;
- ✓ Beneficiaries\Partners status (public/private profit/non-profit);
- ✓ Number of projects implemented by the beneficiary;
- ✓ State-of-the-play;
- ✓ Specific costs categories having a high fraud\corruption risk level, such as staff and/or services;
- ✓ Any critical issue arisen during implementation.

Don't forget to;

- ✓ Get the validation from the CCP for your auditor before signing the work contract
- ✓ Inform the CCP on any important change regarding your auditor during the project life
- ✓ Send the Interim/Financial Reports to the CCP as well as the Audit Reports
- ✓ Provide the CCP with any additional document upon request
- ✓ Be available and ready for an on-the-spot check at any time during the project implementation



ENI
CBCMED
Cooperating across borders
in the Mediterranean



Programme funded by the
EUROPEAN UNION



REGIONE AUTÒNOMA
DE SARDIGNA
REGIONE AUTONOMA
DELLA SARDEGNA



**ENI
CBCMED**
Cooperating across borders
in the Mediterranean



Programme funded by the
EUROPEAN UNION



**REGIONE AUTÒNOMA
DE SARDIGNA
REGIONE AUTONOMA
DELLA SARDEGNA**

Thank You

**Dr. Esmat AlKaradsheh\Office Coordinator
Office for the Eastern Mediterranean –
ASEZA- Aqaba-Jordan.**

ekaradsheh@aseza.jo;

cbc-aqaba@aseza.jo,

+962 7 7771 3935